

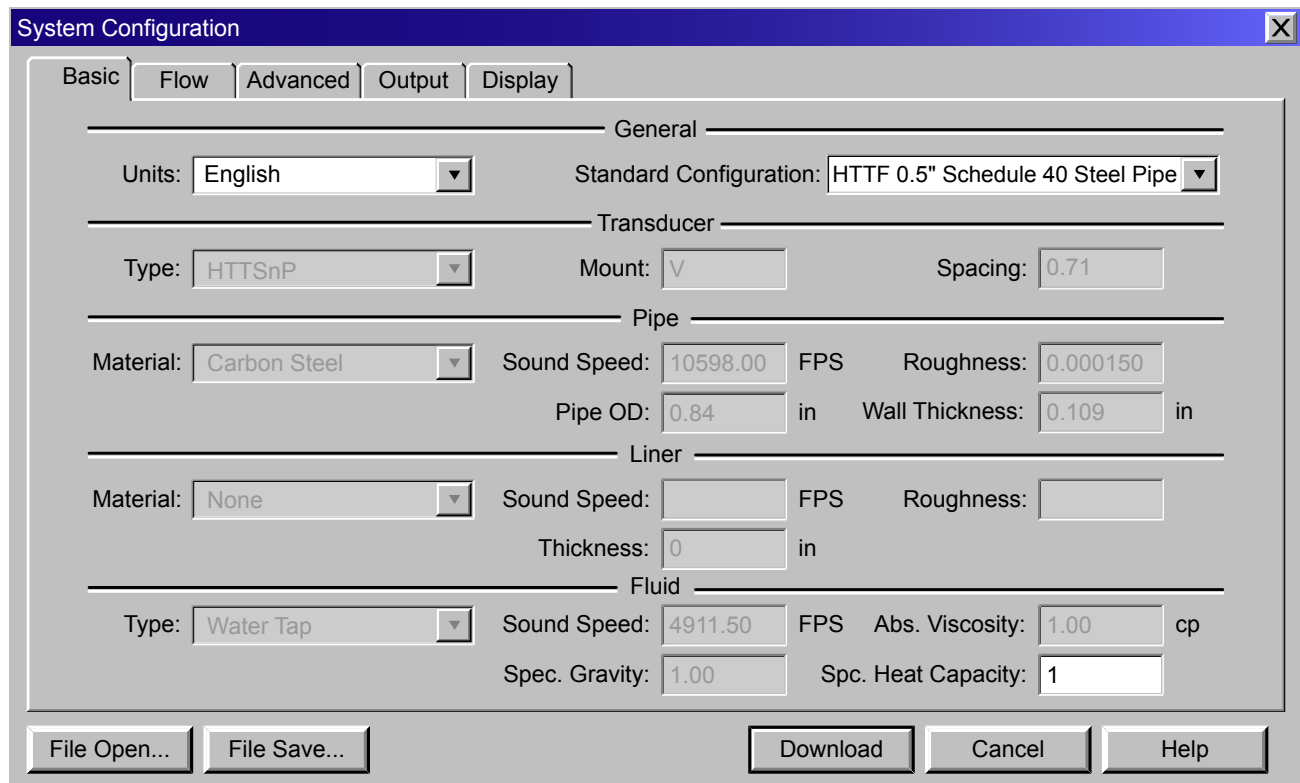
SAVING TFX CONFIGURATION AND CALIBRATION FILES USING ULTRALINK

Many problems that occur in transit time meters can be either traced to or corrected by changes in the configuration or calibration files. The corrections are usually straight forward but without a complete picture of how the meter is set up making the right changes can be difficult.

With copies of the Configuration and Calibration files, and specific information about the application Dynasonics can make suggestions for correcting common problems.

Saving Configuration Files

- 1) Open UltraLink and establish communications with the TFX meter.
- 2) When communications have been established the UltraLink data display screen will be active on the computer.
- 3) Select the System Configuration tab from the menu bar near the top of the screen. The configuration menu should look similar to this:

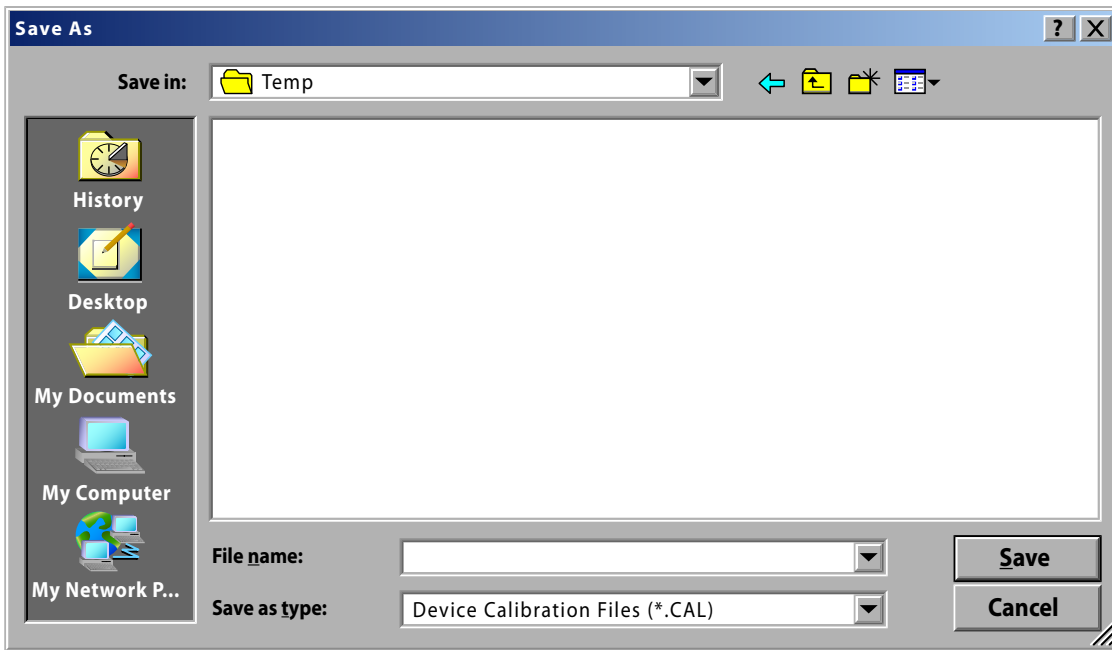


The screenshot shows the 'System Configuration' dialog box with the following settings:

- General:** Units: English; Standard Configuration: HTTF 0.5" Schedule 40 Steel Pipe
- Transducer:** Type: HTTSnP; Mount: V; Spacing: 0.71
- Pipe:** Material: Carbon Steel; Sound Speed: 10598.00 FPS; Roughness: 0.000150; Pipe OD: 0.84 in; Wall Thickness: 0.109 in
- Liner:** Material: None; Sound Speed: (empty) FPS; Roughness: (empty); Thickness: 0 in
- Fluid:** Type: Water Tap; Sound Speed: 4911.50 FPS; Abs. Viscosity: 1.00 cp; Spec. Gravity: 1.00; Spc. Heat Capacity: 1

Buttons at the bottom: File Open..., File Save..., Download, Cancel, Help

- 4) Press the button named "File Save..." near the bottom left hand corner of the System Configuration menu.
- 5) When the "File Save..." button is pressed a new window will appear that will look something like this:

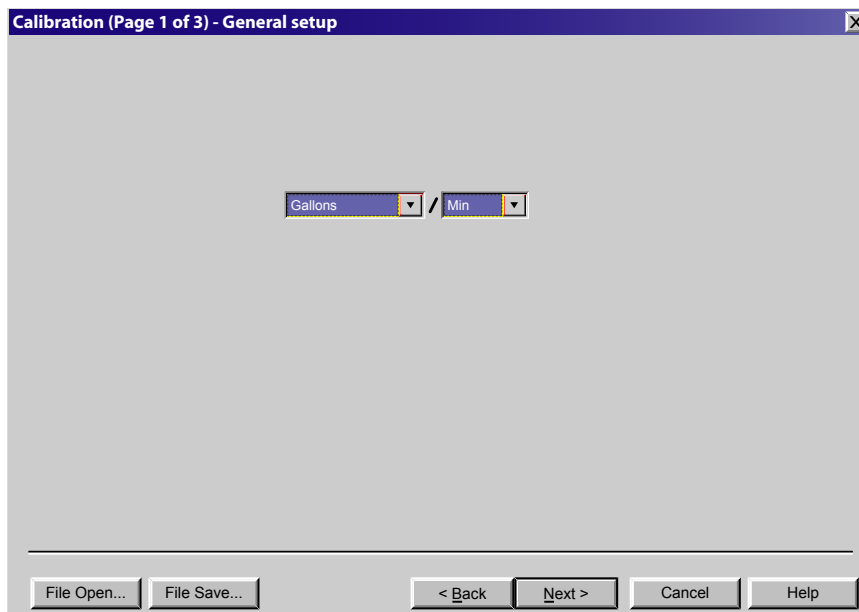


6) Type a name for the file in the "File name:" box and then press the "Save" button.

Note: The DCF (Digital Configuration File) file extension will automatically be added to the file name entered in the box. Be sure to note the location in the "Save in:" box so the file can be located for further action.

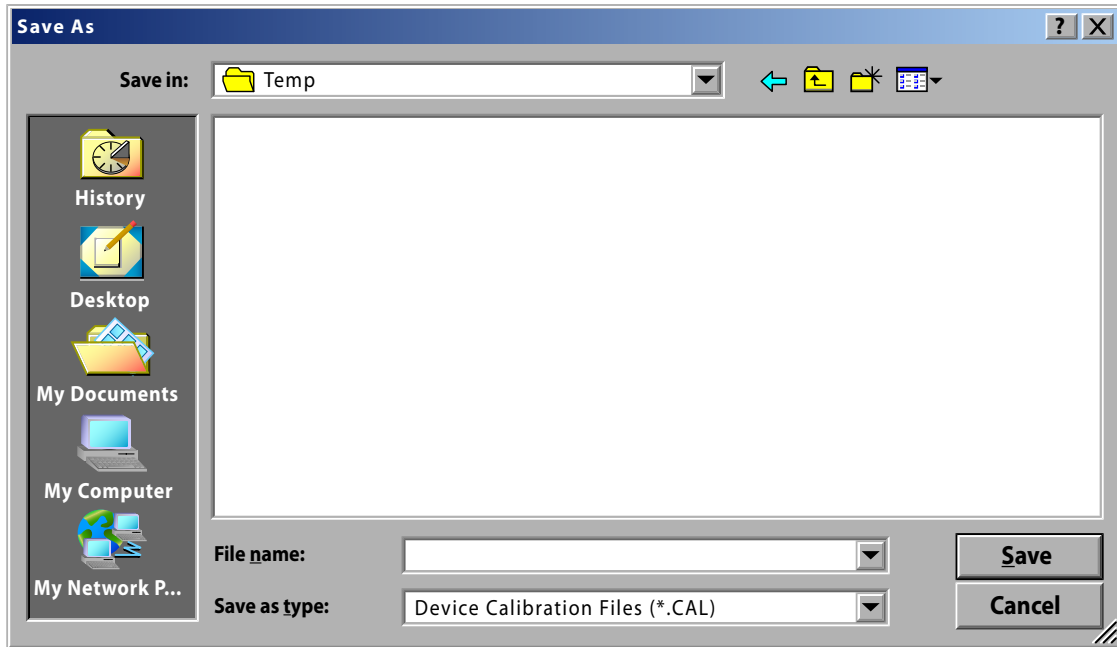
Saving Calibration Files

- 1) Open UltraLink and establish communications with the TFX meter.
- 2) When communications have been established the UltraLink data display screen will be active on the computer.
- 3) Select the Calibration tab from the menu bar near the top of the screen. The first Calibration screen should look similar to this:



4) Press the button named "File Save..." near the bottom left hand corner of the Calibration (Page 1 of 3) screen

5) When the "File Save..." button is pressed a new window will appear that will look something like this:



6) Type a name for the file in the "File name:" box and then press the "Save" button.

Note: The CAL (Calibration File) file extension will automatically be added to the file name entered in the box. Be sure to note the location in the "Save in:" box so the file can be located for further action.

7) After the calibration file has been saved press "Next" button to advance to Calibration (Screen 2 of 3). On screen 2 press "Next" again to go to Calibration (Screen 3 of 3). On screen 3 press "the Finish" button to exit the calibration editor. **Do not make any changes at this point.**

